

Measuring Microscope

ZS Series – Manual/CNC/Probe type



Key Features:

- **Mechanical Structure and Design**
 - The machine base and Z axis was built with granite materials instead of cast-iron that provide rigidity and stability.
 - The grade of granite materials used were compliance to DIN00 standard
 - High precision X-Y stage and Z axis linear bearing was mounted directly onto granite base that provide highly precise and stable instrument
- **16 segment LED Illuminations**
 - LED illumination sources improve contrast and enhance throughput
 - Illumination system can be controlled from 16 different directions
- **Magnification**
 - Coaxial zoom lens with magnification from 28X to 180X
- **CCD Camera**
 - High resolution 410,000 pixel CCD Camera
- **Optional Contact Probe**
 - Capable of attached Renishaw MCP or PH6 + TP20

TECHNICAL SPECIFICATION

ZS- Series – Manual/CNC/Probe Type

Machine Specification			
Model	ZS-3020V/VP/CNC	ZS-4030V/VP/CNC	ZS-5040V/VP/CNC
Measuring Range (X, Y) [mm]	X = 300, Y = 200	X = 400, Y = 300	X = 500, Y = 400
Measuring Range (Z) [mm]	Z = 130(V)/200	Z = 130(V)/200	Z = 150(V)/200
Linear Scale	Bao-I 1 um /Renishaw 0.4 um/ Renishaw 0.1 um		
Accuracy [um]	U1 = 3 + (6L/1000) U2 = 4 + (6L/1000)		
Machine Base	Granite grade complied with DIN 00 standard		
Weight [Kg]	250	280	520
Dimension LXWXH [mm]	680 X 500 X 1500	680 X 600 X 1500	1000 X 1000 X 1700
Country Of Origin	Made in Taiwan		
Manufacturer	Bao-I Technology Corporation		

Electrical Specification		
	ZS-3020V/VP ZS-4030V/VP ZS-5040V/VP	ZS-3020V/VP-CNC ZS-4030V/VP-CNC ZS-5040V/VP-CNC
CCD Camera	High Resolution 410,000 pixel Camera (SENTECH, Japan)	
Lens Magnification	0.7 – 4.5X (28 – 180 X Magnification)(*1)	
Surface Illumination	16 Sector LED Circular Ring Light, separately control	
Contour Illumination	LED	
Probe	VP: Renishaw MCP or PH6 + TP20	
Software	Metro 2.5/3D Manual	Metro 2.5/3D CNC
Driver	Manual	AC Servomotor
Controlling Method	X-Y axis with Quick Release, Z axis - Manual	Joystick & Software
Power Requirement	AC 100 – 240 V / 1KVA	AC220/3KVA

Remarks:

*1 – Auxiliary lens

V – Vision

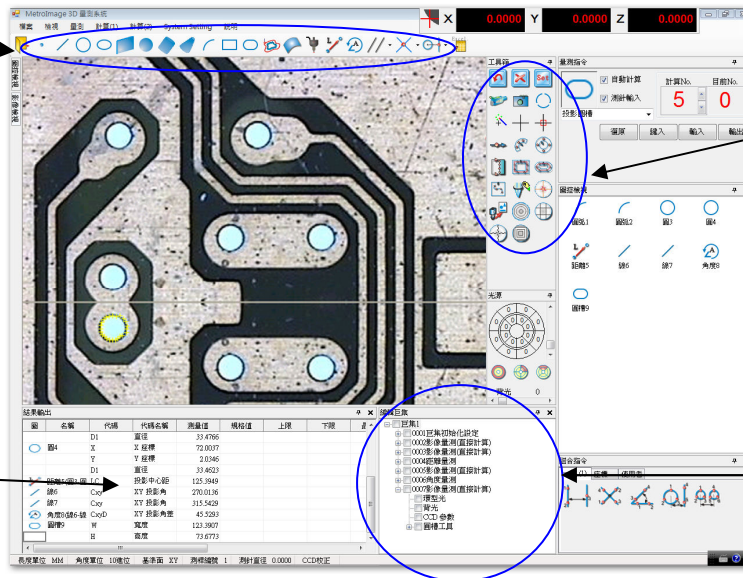
VP – Vision & Probe

CNC – Computer Numerical Control

Software

Metro Image 2.5D/3D Measuring Software

All types of features such as line, circle and etc

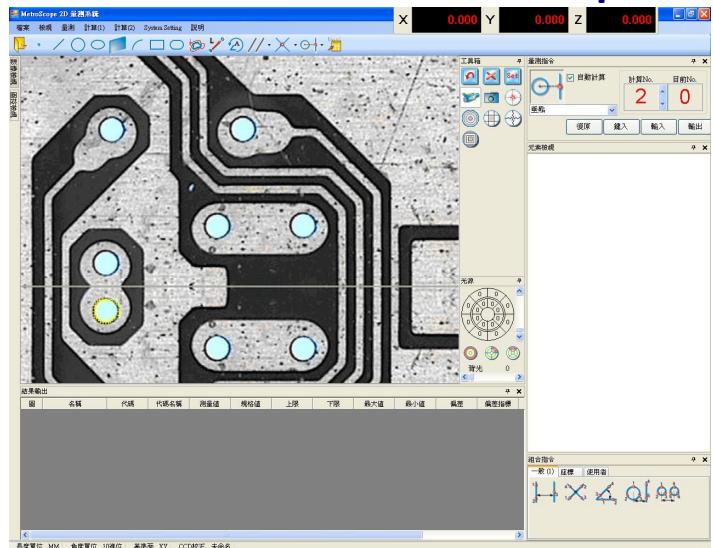


Various type of detecting tools available

Result window

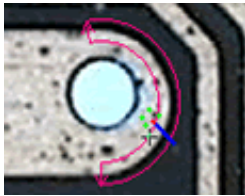
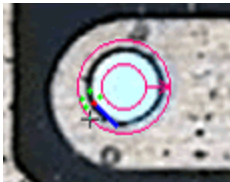
Macro Programming

Metro Scope 2D

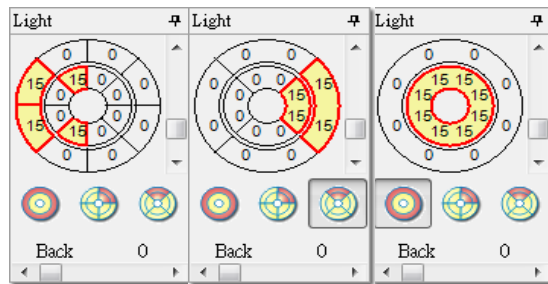


Metro Image 2.5D/3D Measuring Software

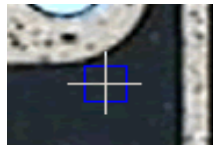
1. Smart and intelligent detecting tools for accurate, convenient and easier measurement



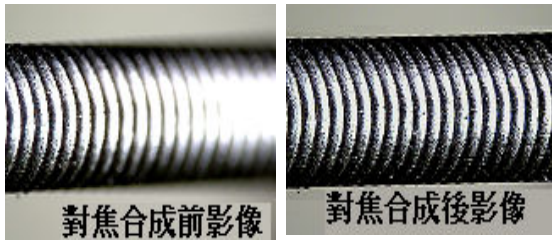
2. Multi-sector ring light control to achieve best image casting (16 Sectors)



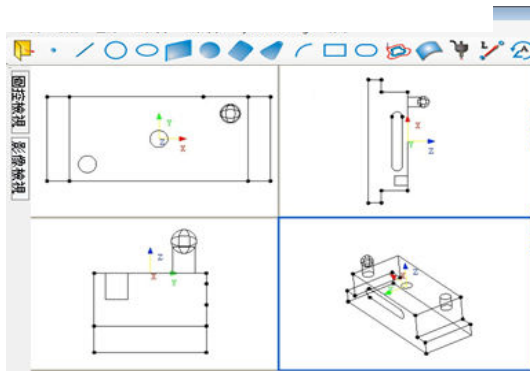
3. Quick point taking with mouse



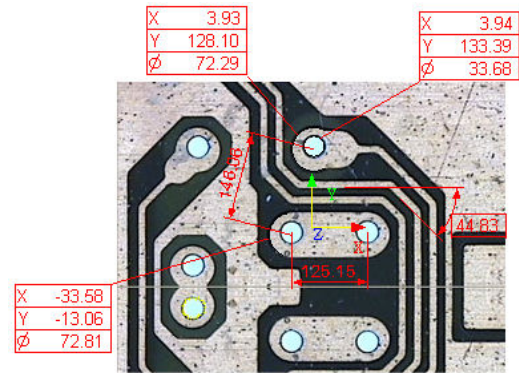
4. Superimpose 3D images for dimension measurement



6. Multiple windows for different viewing angle of imported drawing

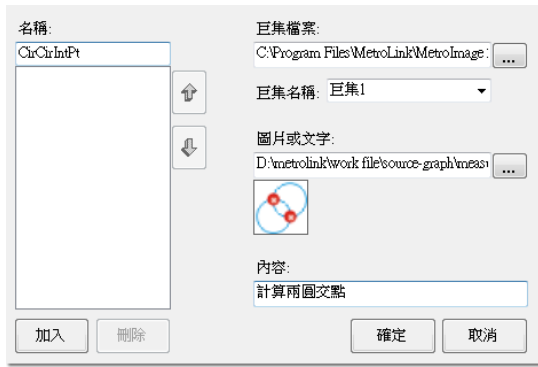


5. Measurement dimension can be pasted onto captured images for reporting

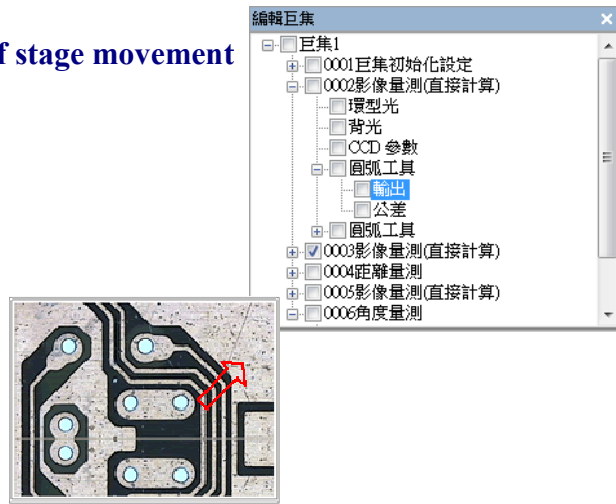


Metro Image 2.5D/3D Measuring Software

7. Icon can be assigned for Macro program



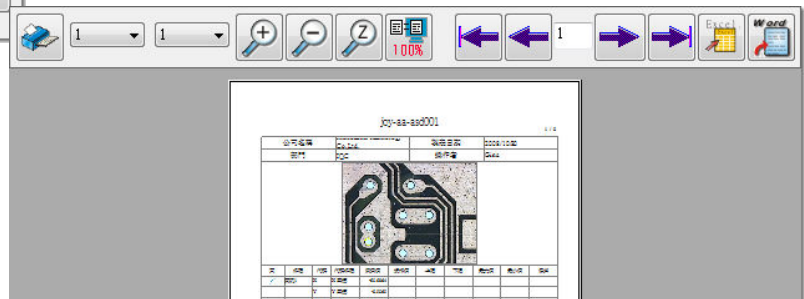
8. Arrow guide for direction of stage movement when software execution



9. Measurement data can be sent directly to Microsoft Excel and SPC results can be tabulated in Excel table



10. Result can saved in Excel or Words format



Contact Us :

ForteSolution Pte Ltd

**Address : 809 French Road,
#05-152 Kitchener Complex
Singapore 619974**

Tel : 65-6639-8045 Fax:65- 62195932

Email : <mailto:fortesolution@ymail.com>

Website : <http://fortesolution.yolasite.com>

Company & GST Reg. No: 201009911E